

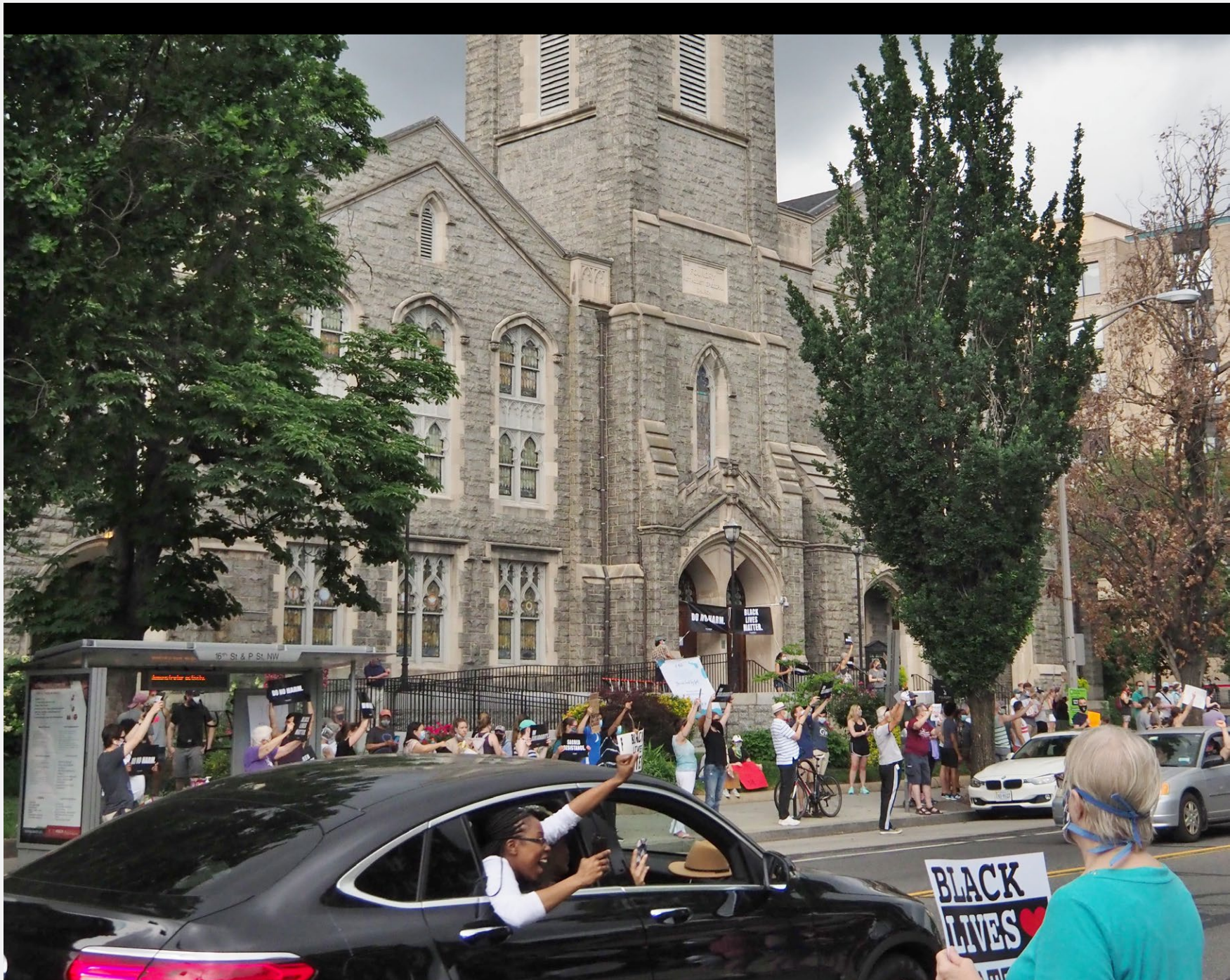
FEARLESS GENEROSITY

**FOR SUCH A  
TIME AS THIS**

FOUNDRY  
UNITED METHODIST CHURCH  
WASHINGTON, DC











**Foundry, we have been called “for such a time as this.”** On Pride Sunday and just weeks following the murder of George Floyd, Rev. Kimberly Scott kicked off our summer guest preacher series by preaching the story of Esther who was urged to risk everything to advocate for her people (Esther 4:14). Rev. Scott was bold and clear in her charge to us: “Foundry you are being called to live as if your loved ones’ lives are at risk.”

**Our loved ones are at risk,** loved ones of all ages, nations, races, orientations, abilities, and identities—from those closest to us to siblings we’ve never met. We anticipated this year would be difficult, with both the United Methodist General Conference and the presidential election on the horizon. But 2020 has brought challenges beyond our wildest dreams as the pandemics of COVID-19 and systemic racism have broken not just human bodies but the body politic. Illness and injustice continue to take a devastating toll.

Through it all, **Foundry continues as an anchor, a lifeline, and a beacon in the storm.** We have provided concrete support for vulnerable neighbors in DC and seamlessly pivoted our worship, music, discipleship, family, and care ministries to online experiences. Foundry’s impact has not lessened but grown in these months of quarantine. Our witness in the wake of the murder of George Floyd touched hearts and minds not only of our immediate neighbors, but people of faith and conscience across the country.

And our online presence through worship, classes, and weekly clergy reflections has become a source of spiritual strength and nurture for persons who have never stepped foot in our space at 16th and P Street, NW. When I've spoken to folx who, for a variety of reasons, have not been connecting regularly, the sentiment is always the same: gratitude that Foundry is always active and present whether they are or not.

This crucible time has revealed how important Foundry is in any moment but certainly in such a time as this. **As we look to the future, it is clear this is not a time to retreat or to shrink our commitments and vision.** The world and the church are changed and changing. In this context, Foundry will be Foundry—and that means we will continue to adapt, lead, serve, and meet the new challenges of our time with faith, hope, love, and strategic thinking.

In the following pages you will see the incredible impact that your fearless generosity has made over the past year. Your gifts toward our \$2.35M goal for 2021 will fund both existing programs and a vision to:

- **Develop of a 3-5 year Strategic Plan** for Foundry that will include the issues and objectives identified through the Journey to Racial Justice initiative.
- **Strengthen our Sacred Resistance work** including our efforts around housing and fair wages, immigration, poverty, environmental justice, advocacy for LGBTQ siblings and General Conference organizing, and Black Lives Matter.

- **Cultivate the Virtual Campus** already “under construction” to support the discipleship and spiritual nurture of people from across the country and around the world who are engaging with Foundry digitally and who will continue to connect in this way post-pandemic.
- **Adaptation of Technologies and Physical Spaces** to create safety, accessibility, and support for emerging ways of being the church.
- **Investment in Human Resources**—particularly in the areas of digital engagement, communication strategy, and administrative and technical expertise, that will provide support for existing, growing ministries and facilitate development of the new initiatives.
- **Commitment to Fiscal Responsibility** through replenishment of the operating reserves and payment of existing debt related to our Mission Possible Capital Campaigns.

**Foundry, we have been called for such a time as this...**and fearless generosity is required to meet the challenge. So much is at stake. If not us, who? If not now, when? I trust that together we will be a part of the new thing God is doing in this time as we continue to Love God. Love each other. Change the world.

Your partner in Fearless Generosity,  
**Ginger Gaines-Cirelli**  
Senior Pastor



# THE STEWARDSHIP MINISTRY

---

## TEAM THANKS YOU

---

Dear Foundry Family,

What a year! When we were celebrating the success of last year's Stewardship Campaign in January of 2020, we had no idea what lie ahead of us. Through the COVID-19 pandemic, the ensuing economic crisis, and a summer of reckoning for racial justice, Foundry has been a cornerstone as we all have navigated the events of 2020.

Now, we come to you again as we look to what lies ahead in 2021. Our theme this year, "Fearless Generosity: For Such a Time As This," could not be more fitting. We know that whatever happens in our world, Foundry will continue to lead, advocate, support, and adapt. With the power of our collective gifts, financial and otherwise, Foundry will provide new ways to be in community, serve our neighbors, and fight for the most vulnerable.

This booklet outlines just some of what your financial gifts have made possible through Foundry in 2020 and what we hope to do together in 2021. We hope you'll read this, reflect on all of the ways you have been challenged and strengthened through Foundry this year, and submit an estimate of giving for 2021 by Consecration Sunday, October 25th, to help us reach our ambitious \$2.35 million goal.

Submitting an estimate of giving allows the Foundry clergy and board to create a budget for the coming year that keeps the vital mission and ministries of Foundry thriving. Estimates do not roll over from year-to-year. Even if you have provided an estimate in past years or have active recurring gifts, we ask you to submit an estimate of giving for 2021 in order to be counted in the campaign total for the coming year.

You may submit your estimate online at [foundryumc.org/give](https://foundryumc.org/give). Thank you for prayerfully considering joining us, either for the first time, the fiftieth time, or somewhere in between. Submitting an estimate of giving is a true act of faith. In the uncertainty that surrounds us, we submit our estimates now, trusting in God to lead, guide, and support us along the way.

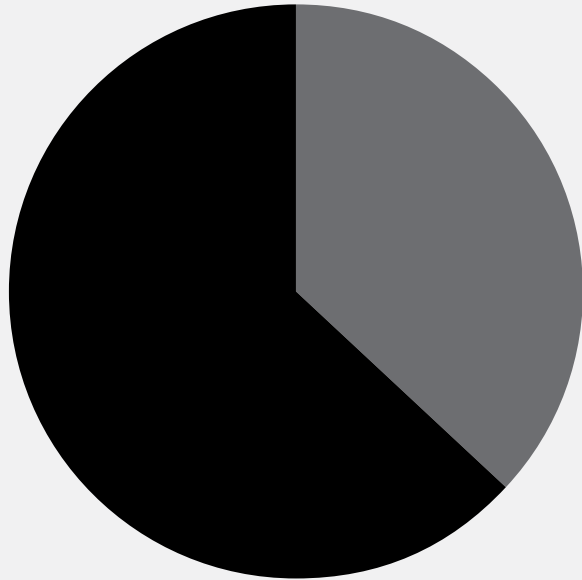
We are thankful for you and the many ways you give to Foundry through your prayers, presence, gifts, service, and witness.

Sincerely,  
**The Stewardship Ministry Team**  
Shelley Jessee, Chair  
Terry Birkel, Anna Driscoll, Eddie Gouge,  
Matt Hansen, Sam Kilpatrick, Nick Minnich



# 2020 IMPACT SUMMARY

The amounts listed below are based on the 2020 total budget of \$2.7M, with \$1.9M of revenue for these expenses, coming directly from the estimated gifts provided throughout 2020. Fearless generosity at work!



**PROGRAMS \$1,677,203**

**OPERATIONS \$975,143**

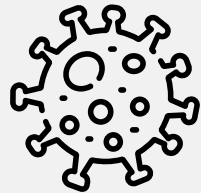
**TOTAL: \$2,652,346**

\*All financial information is audited annually by the firm Citrin Cooperman, Washington, D.C. Final audited statements for 2019 can be found in our church office.



# SOCIAL JUSTICE

**2020 IMPACT** \$437,964



## **COVID-19 RELIEF ASSISTANCE**

- Given over \$65k to partners on the front line including:
  - ☑ Unity Health Clinics
  - ☑ Bread for the City
  - ☑ Miriam's Kitchen
  - ☑ Pathways to Housing
- Given over \$25k in direct assistance to prevent evictions



## **JOURNEY TO RACIAL JUSTICE**

- Under the leadership of Dr. Kumea Shorter-Gooden and 9 Foundry members, seamlessly transitioned all JRJ work to virtual platforms
- Conducted a church sensitivity survey with 477 participants
- Launched the interactive microsite with JRJ resources, survey results, and learning opportunities [foundryumc.org/jrj](https://foundryumc.org/jrj)



## **SACRED RESISTANCE**

- Over 200 individuals participated virtually in direct action and advocacy for the 2020 DC budget hosted by WIN
- Logged over 8,000 volunteer hours in support of multiple Black Lives Matter protests



# MOVING FORWARD IN 2021



Continue to support the immediate needs in the community during and post-pandemic



Establish 3 scholarships for DC Trade School Attendees



Provide a robust presence at the UMC General Conference in Minneapolis, MN



# WORSHIP AND MUSIC

2020 IMPACT \$429,051



Launched and hosted **Waypoint** an interactive, virtual worship service that served as a model for similar worship services in California, Illinois, and Minnesota and engaged people from over 13 states.



Hosted **four dynamic preachers** as part of our Summer preaching series.



Adapted and developed **new liturgies for online, interactive worship** in response to COVID-19.



- Developed a **Virtual Music Team**.
- Held **weekly virtual hymnsing projects** for Foundry Choirs.
- Launched **Black Composer Series**.
- Launched **Guest Artists Series**.



# MOVING FORWARD IN 2021

- ✓ Develop interactive models of intergenerational worship experiences
- ✓ Launch a network of 'worship watch parties'
- ✓ Host safe, socially distanced, in-person communion gatherings
- ✓ Establish Virtual Recording Studio
- ✓ Establish Foundry Chamber Singers



# HOSPITALITY AND CONGREGATIONAL CARE

2020 IMPACT \$369,843



- Seamless transition to virtual Sunday and weekly prayer opportunities
- Averaging over 50 digital prayer requests per week
- Engaged 90% of our active members through phone calls, virtual gatherings, and 1:1 check ins
- Welcomed 26 new, virtual members to Foundry
- Engaged over 663 visitors to digital worship
- Hosted 4 virtual Pastor's Coffees
- Taught 5 Disciple's Path classes
- Hosted a summer prayer retreat with over 30 people
- Hosted 3 Pre-Cana Marriage Counseling classes serving 15 couples
- Seamlessly shifted all in-person support groups to online

## MOVING FORWARD IN 2021



Connect with “Foundry from Afar” community



Intentional engagement with non-technological Foundry community



Revitalize the Stephen Ministry Team



# DISCIPLESHIP



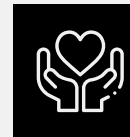
2020 IMPACT \$225,567

- Over 300 participants in small groups
- Launched **William Astor and Vivian T Kirk Symposium**
- Hosted **Dr. Ibram X. Kendi** for a community master class
- Through the joint fellowship with Asbury UMC and John Wesley AME Zion churches, hosted **Howard Thurman: Toward a Spiritual Ethic of Social Equity** retreat
- Seamlessly transitioned all in-person, adult spiritual formation to digital formats
- Launched digital video series **Invitations to Spiritual Disciplines**

## MOVING FORWARD IN 2021



Launch 4 additional digital learning opportunities.



Host a digital **William Astor and Vivian T Kirk Symposium** with speaker **Dr. Wil Gafney**.



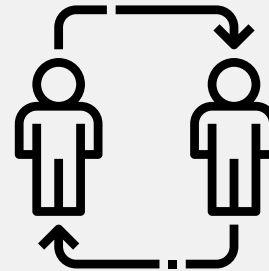
Launch 3 additional online small groups for **Foundry from Afar** members.

# FAMILY

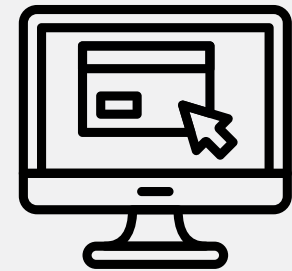
2020 IMPACT \$214,778



- Welcomed 75 new babies, children, and youth to Family Ministries Programs.
- Created Foundry Generations, the home of Foundry Family Ministries' intergenerational opportunities.
- Carried out an 'at-home' ASP week that packed over 150 bags for local families and impacted the lives of more than 700 people.



- Offered an intergenerational LifeHackers program giving our youth opportunities to gain life skills and learn from Foundry adults.
- Created virtual acolyte program for our kids and youth.
- Established a relational model for small groups of our Foundry Parents that offers support and encouragement.
- Held a virtual Family Camp experience with 47 participants and an in-person, socially distanced nature hike.



- Redesigned the Foundry Family Ministries section of the website to accommodate visitors and create a meaningful first encounter for visitors that communicates our core values.
- Offered a Kid's Summer Bag for our families to use to continue spiritual formation/education over the summer.



# MOVING FORWARD IN 2021



Establish 2 meaningful connection points for Foundry Parents to find solidarity, support, and encouragement.



Offer opportunities for Foundry Youth to creatively integrate and lead the larger congregation.



Create sustainable and innovative ways for Foundry Kids to worship and participate in meaningful educational opportunities.



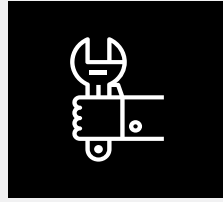
# OPERATIONS, FACILITIES, FINANCE, & COMMUNICATIONS

**2020 IMPACT** \$975,143



## OPERATIONS

- ✓ Immediate deployment of remote offices for all staff
- ✓ Adjusted mail operations to ensure seamless delivery
- ✓ Launched Reentry Task Force



## FACILITIES

- ✓ Repaired vintage tiles in Narthex entry
- ✓ Developed Reentry plan post COVID-19
- ✓ Modified all exterior signage to reflect online witness and worship



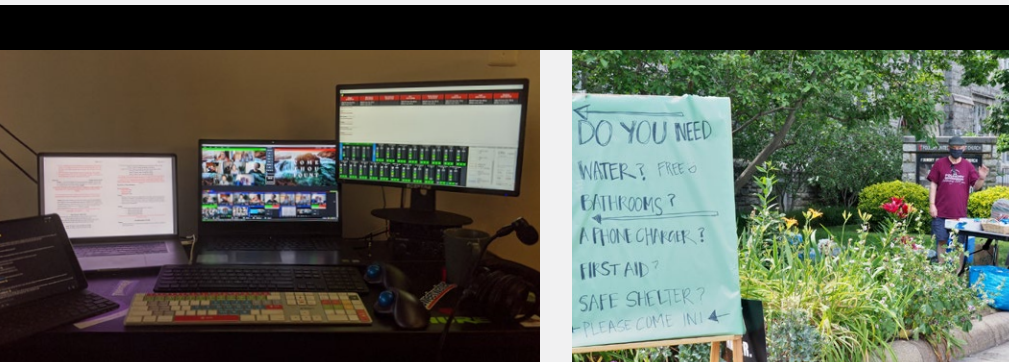
## FINANCE

- ✓ Migrated stewardship estimates to donor app
- ✓ Completed 2019 audit with successful outcomes
- ✓ Received over \$55k for Lenten Appeal
- ✓ Distributed 100% of Lenten Appeal to community partners responding to COVID-19 within 14 days
- ✓ 28% increase in online donations



## COMMUNICATIONS

- ✓ Modified the website for online worship offerings
- ✓ Added 4 additional online platforms for worship
- ✓ Modified livestream technology to be all remote
- ✓ Immediate deployment of staff led communications team for COVID-19 response
- ✓ Developed online strategy for internal and external communications





# MOVING FORWARD IN 2021



## Operations



Provide safe reentry for staff operations post-pandemic



Provide touchless environment for basic operational needs



## Facilities



Maintain recommended CDC guidelines for safe return to building



## Finance



Host 2 Planned Giving Events



Continue building up operating reserves



## Communications



Grow digital engagement with improved tools



Grow staff led communications team







# OUR GOAL FOR 2021 : \$2.35 MILLION

Regularly scheduled annual giving supports everything we do and are at Foundry Church. Your gift is spent on all aspects of our worship, outreach, and community life. It also provides the leadership of Foundry to plan effectively for the ministries that allow us to deepen faith, create engaged communities, and transform the world through God's love. Giving is an act of worship and a way of deepening faith both individually and as a community. We ask every member of the Foundry community to prayerfully consider how they might give of themselves and their gifts in 2021.

Our goal for this year's stewardship campaign is \$2.35 million. This ambitious goal reflects the bold vision laid out in the pages proceeding for how Foundry will serve the world in 2021. Weekly nonmember giving amounts to approximately 8% of our annual budgeted revenue and has decreased in light of the pandemic. The single most important source of funding for our ministries comes from the receipt of scheduled gift commitments made during our annual stewardship campaign, providing 90% of the church's income. **Will you join us by submitting an Online Estimate of Giving and to help us reach this goal?**



# WHY MAKE AN ESTIMATED GIVING CONTRIBUTION FOR 2021?

The single most important source of funding for our ministries comes from the estimated giving contributions during our annual stewardship campaign. Unlike some churches, Foundry receives virtually no funds from an endowment. We are grateful for the faithfulness of our congregation as we have consistently received at minimum, a 90% fulfillment rate for all promised commitments.

These commitments provide us with a forecast on which we build our expense budget for the coming year. We acknowledge each gift to be as unique as the individual giver, and we strive to be exceptional stewards of the resources entrusted to us.

**This year, we encourage you to engage fearless generosity and consider estimating a gift that is both responsible and significant based on what God is calling you to give.**

YEARLY INCOME	AMOUNT GIVEN	15%	10%(TITHING)	8%	5%	2%
\$10,000	WEEK	\$29	\$19	\$15	\$10	\$4
	MONTH	\$125	\$83	\$67	\$42	\$17
	YEAR	\$1,500	\$1,000	\$800	\$500	\$200
\$20,000	WEEK	\$58	\$38	\$31	\$19	\$8
	MONTH	\$250	\$167	\$133	\$83	\$33
	YEAR	\$3,000	\$2,000	\$1,600	\$1,000	\$400
\$40,000	WEEK	\$115	\$77	\$62	\$38	\$15
	MONTH	\$500	\$333	\$267	\$167	\$67
	YEAR	\$6,000	\$4,000	\$3,200	\$2,000	\$800
\$60,000	WEEK	\$173	\$115	\$92	\$58	\$23
	MONTH	\$750	\$500	\$400	\$250	\$100
	YEAR	\$9,000	\$6,000	\$4,800	\$3,000	\$1,200
\$80,000	WEEK	\$231	\$154	\$123	\$77	\$31
	MONTH	\$1,000	\$667	\$533	\$333	\$133
	YEAR	\$12,000	\$8,000	\$6,400	\$4,000	\$1,600
\$100,000	WEEK	\$288	\$192	\$154	\$66	\$38
	MONTH	\$1,250	\$833	\$607	\$417	\$167
	YEAR	\$15,000	\$10,000	\$8,000	\$5,000	\$2,000
\$150,000	WEEK	\$433	\$288	\$231	\$144	\$58
	MONTH	\$1,875	\$1,250	\$1,000	\$625	\$250
	YEAR	\$22,500	\$15,000	\$12,000	\$7,500	\$3,000
\$200,000	WEEK	\$577	\$385	\$308	\$192	\$77
	MONTH	\$2,500	\$1,667	\$1,333	\$833	\$333
	YEAR	\$30,000	\$20,000	\$16,000	\$10,000	\$4,000

All photos used by the expressed permission of Phil Carney of Washington, DC.

FEARLESS GENEROSITY

## FOR SUCH A TIME AS THIS

Name: \_\_\_\_\_

Address: \_\_\_\_\_

City: \_\_\_\_\_ State: \_\_\_\_\_

Zip: \_\_\_\_\_ Phone: \_\_\_\_\_

Email: \_\_\_\_\_

The Bible guides us to tithe (10% of income) or move toward tithing as we give to God's ongoing work. I/we, therefore, make my/our commitment to **Foundry's 2021 General Fund** operating budget for mission and ministries. Please count on my/our commitment in the following manner:

**TOTAL COMMITMENT IS \$**

Contribution Schedule:

\$ \_\_\_\_\_ one time      \$ \_\_\_\_\_ yearly

\$ \_\_\_\_\_ per week      \$ \_\_\_\_\_ bi-weekly

\$ \_\_\_\_\_ per month      \$ \_\_\_\_\_ semi-monthly

\$ \_\_\_\_\_ quarterly      \$ \_\_\_\_\_ semi-annually

### Electronic Giving & E-Statements

If you would like to go paperless and utilize online giving visit [foundryumc.churchcenter.com/giving](https://foundryumc.churchcenter.com/giving) to sign up for recurring contributions and electronic statements.

The link to the online form is found here:

[foundryumc.churchcenter.com/people/forms/164654](https://foundryumc.churchcenter.com/people/forms/164654)

To learn more about including Foundry in your estate planning, email [foxallsociety@foundryumc.org](mailto:foxallsociety@foundryumc.org).

Please turn in your estimated giving  
card on or before Consecration  
Sunday, October 25, 2020.

**FOUNDRY**  
UNITED METHODIST CHURCH  
WASHINGTON, DC

NO MATTER WHERE YOU COME FROM OR WHERE YOU GO

NO MATTER WHAT YOU BELIEVE OR DOUBT

NO MATTER WHAT YOU FEEL OR DON'T FEEL

NO MATTER YOUR IMMIGRATION STATUS OR WHOM YOU LOVE

YOU'RE WELCOME TO COME JUST AS YOU ARE AND BE MET BY OUR GOD

WHO KNOWS YOU BY NAME AND WHO LOVES YOU, AND WANTS TO HAVE AN

EVER CLOSER RELATIONSHIP WITH YOU.

---

[WWW.FOUNDRYUMC.ORG](http://WWW.FOUNDRYUMC.ORG)